



CIM Mining Information and Technology Standards and Guidelines Committee

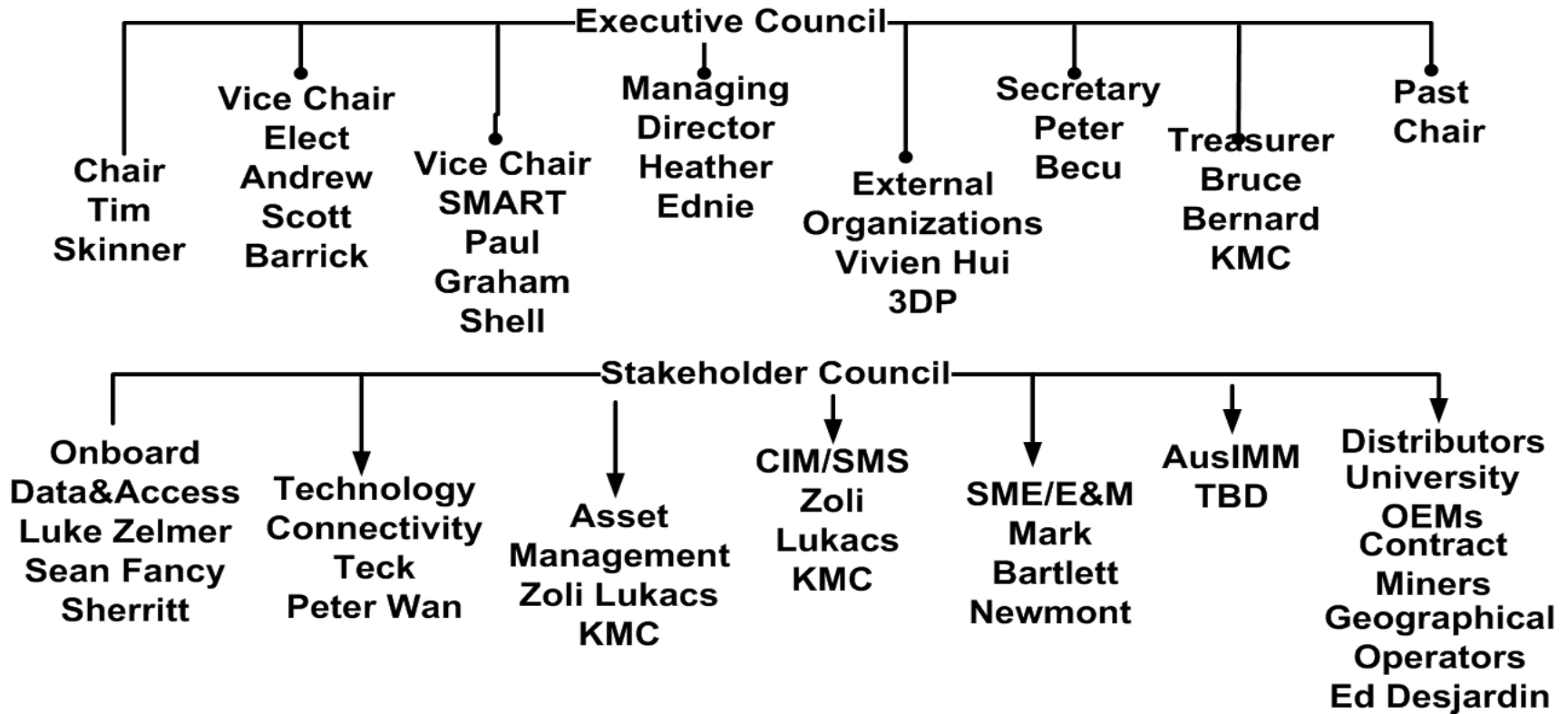
SMART presentation
Edmonton May 6, 2012



Organization



Governing Council



Open Member Assembly



Implementation Plan (Jan-May)



- February 19: SME OEM/OTM Summit
 - Overall support
- Outreach to organizations (IREDES, EMESRT, SME, AEMP, CMIC, CSA, etc)
- Site visits (Peoria: Cat, Komatsu, Flanders)
- Fundraising initiated (SME/CIM/[AusIMM](#), SMART members, Vendors)
- 4 Working Groups
- Monthly Governing Council meetings
- Website 80% complete



Supporting Organizations



Mine Operators

AngloGold Ashanti	Mitsubishi Development
Anglo American	Newmont
ArcelorMittal Mines	North American
Barrick	NovaGold
BHP Billiton Diamonds	Peabody Energy
BHP BMA Coal Australia	Prairie Mines & Royalty
CNRL	Quadra FNX/KGHM Int
Cliffs Natural Resources	Shell Canada
De Beers Canada	Suncor Energy
Foundation Coal West	Syncrude Canada
Freeport McMoRan	Teck Resources
Goldcorp Canada	Thiess Pty
Imperial Oil	Total E&P Canada
IOC – Rio Tinto	TransAlta
Kinross Gold	URS Corporation
KMC Mining	
Ledcor CMI	

OEMs/OTMs

3D-P	Komatsu Excavator
Atlas Copco	Liebherr
Finning	MMSI
Flanders	P&H
Ivara	Sandvik
Hitachi	Wenco

Industry Organizations

- CIM Surface Mining Society
- CIM
- SMART
- SME



3 Year Program



Prepared 3 Year Budget \$175K - \$250K

Phase One (Implementation and Start-up):

- CIM and CIM Surface Mining Society
- Corporate Participants (SMART members and other stakeholders)
- Monetary and in-kind support

Phase Two (To be developed):

- Collaboration
- Self-sustaining (events, publications)
- Sponsorships (stakeholders)



2012 - Next Steps



- ✓ **Website: launch end of May 2012**
- ✓ **Funding: on-going (over 40% to-date)**
- ✓ **Communications & Membership**
- ✓ **Industry & Standards Organization Engagement**
- ✓ **Mining Companies Engagement**
- ✓ **OEM/OTM Engagement**
- ✓ **Working Groups**



Standards/Industry Organizations



International Standards Organizations

CSA	IEEE
SAE	SCC
ISA	ISO
JAUS	COPANT
EDM Council	ICMM

Regional/National Bodies
Issue/Technology-Specific
Bodies

Mining Associations & Standards Organizations

IREDES	ACARP
SPE	PapTac
MIMOSA	CRC Mining
AusIMM	IOM3
SAIMM	CMIC
CEMI	EMESRT
IAARC	AEMP
CIM	AEM
CAMESE	PDAC
MAC	MIMOSA



Working Groups



Onboard Data and Access

- ❖ Equipment Data for Primary Mining Fleets

Technology & Connectivity

- ❖ Onboard HW & SW
- ❖ Connectivity Networking & Communication

Asset Management

- ❖ Industry Definitions

Situation Awareness

- ❖ Integrated Operator Interface



AGM Agenda



- Wednesday, May 9, 8:30 – 10:30
Salon 11, Shaw Conference Center
- Information: Heather Ednie, hednie@cim.org

Thank you for your support!